

S-Chrome Portable Gas Chromatograph

Portable GC **S-Chrome** – compact instrument for sulfur-containing compounds analysis in various media for stationary and mobile laboratories.



Our priorities

- Performance
- Reliability
- Flexibility
- Convenience
- Cost-efficiency

Support & Service:

BACS provides various ways of warranty and support programs including factory & end-user side training, phone & web assistance and customizable solutions for wide range of applications.

For more information on any of our products or services please visit us at: www.bacs.ru

Application

Analysis of H₂S and mercaptans in

- ✓ Natural gas (NG)
- ✓ Associated petroleum gas
- ✓ Liquefied gases (LPG)
- ✓ Oil and oil products

Features and benefits

- ✓ High-sensitive **electrochemical detector** (ECD) and capillary columns;
- ✓ **Air** as a carrier gas;
- ✓ Optional **integrated pump** for air supply – no cylinder is needed;
- ✓ High measurement accuracy and fast analysis;
- ✓ A specialized injection unit with the same dividing rate for gas and liquid samples;
- ✓ The possibility of analysis high concentrations of **H₂S** due to the attenuation of the detector signal by a factor of 10 at selected sections of chromatograms;
- ✓ Wide detection range and good linearity;
- ✓ Built-in gas flow meter at output of the detector and column (autonomous setting of gas flow without additional devices);
- ✓ Easy to handle and service;
- ✓ Compact size and low power consumption;
- ✓ Easy maintenance with low service cost.

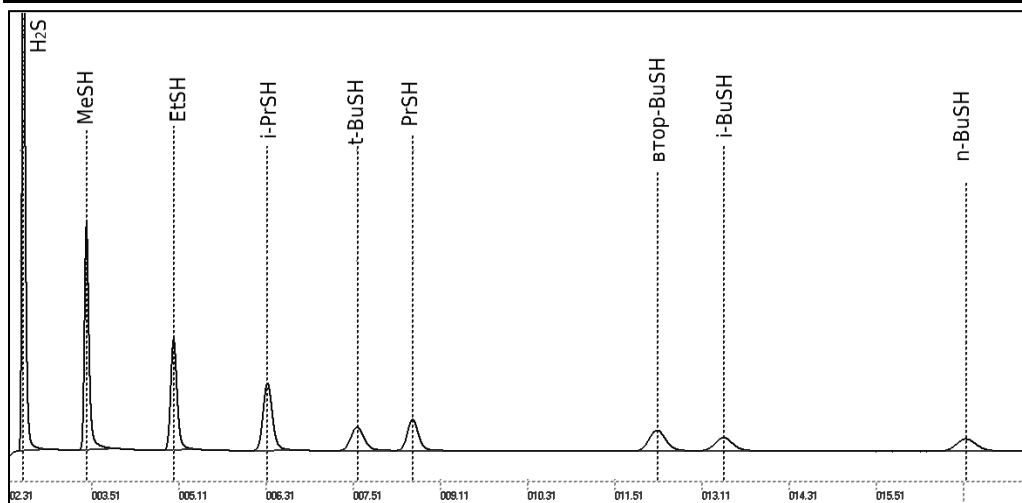
Specification

Technical characteristics

Analyzed media	Gas, liquefied gas or liquid
Type of detector	Electrochemical
Carrier gas	Air
Carrier gas consumption	No more than 40 cm ³ /min
Temperature of columns, °C	From +40 to +160
Temperature of vaporizer, °C	From +40 to +160
Temperature of detector, °C	From +40 to +50
Communication interfaces	RS-485, Ethernet
Power consumption	up to 120 W (warm-up); up to 15 W (steady mode)
Ambient temperature range, °C	From +10 to +40
Weight, kg	No more than 10
Dimensions (L×W×H), mm	360×160×285

Metrological characteristics

Analyzed components	H ₂ S, mercaptans
Repeatability (RSD), %	No more than 3
Detection limit, ppm	No more than 0,02 (for H ₂ S), No more than 0,03 (for C ₂ H ₅ SH)
Analysis time, min	No more than 6 (up to EtSH), No more than 20 (up to BuSH)



Chromatogram of sulfur compounds in natural gas

Custom solutions

We are able to design a custom analytical solution for your specific application. For more information please don't hesitate to contact us.

BACS LLC Contact information:

Address: 22 Kirova ave., Samara 443022, Russia
Phone/Fax: +7 (846) 267-38-12 (-13 / -14)
E-mail: info@bacs.ru **Web:** www.bacs.ru